

Pelham Public Schools Rooftop Solar PV Projects



Solar Update
2/21/24

1. Interconnection Update

- Applications were submitted to Liberty Utilities in Oct 2023.
- Liberty Utilities initiated the Impact Studies for Pelham Elementary, Memorial, and High School on January 22, 2024. These studies are expected to be delivered to Kearsarge by late April 2024. Completion of the impact study will define the final size and configuration of the system.
- Once the Impact Studies are received, Kearsarge can then execute Interconnection Service Agreements with Liberty Utilities and commence detailed design and permitting.

2. Design and Permitting

- Current design is for a total of ~ 1.9 MW DC across the 3 schools v. 1.75 MW DC in the RFP response.
- Kearsarge completed the engagement of the civil engineering firm that will assist with permitting – Meridian Associates – and completed the initial structural review of the buildings.
- The structural review analysis was positive, confirming that each building had capacity to carry the arrays. Detailed layout (sizing) and permitting will take place following receipt of the interconnection study results.

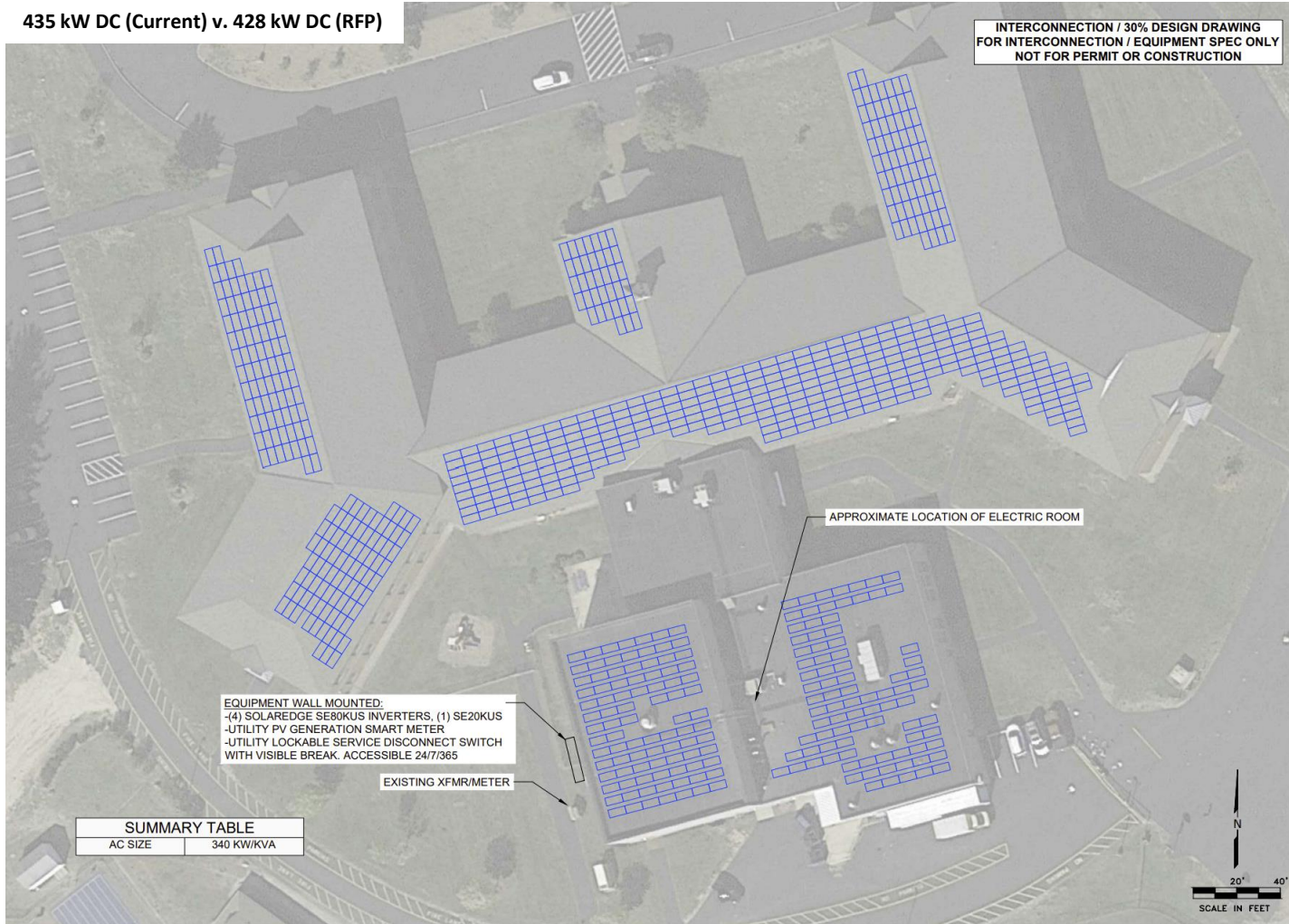
3. Expected Schedule / Next Steps

- Interconnection Study Results – Apr 2024
- Detailed engineering / permitting package – May / Jun 2024
- Complete contracts – May / Jun 2024 (once final design is locked in)
- Site Plan Review – Jun 2024
- Construction Permitting – Jul 2024
- Construction Start – Aug 2024 (dependent on equipment lead times)
- Project Completion – Q1 2025

Pelham Elementary School Array

435 kW DC (Current) v. 428 kW DC (RFP)

INTERCONNECTION / 30% DESIGN DRAWING
FOR INTERCONNECTION / EQUIPMENT SPEC ONLY
NOT FOR PERMIT OR CONSTRUCTION



EQUIPMENT WALL MOUNTED:
-(4) SOLAREEDGE SE80KUS INVERTERS, (1) SE20KUS
-UTILITY PV GENERATION SMART METER
-UTILITY LOCKABLE SERVICE DISCONNECT SWITCH
WITH VISIBLE BREAK. ACCESSIBLE 24/7/365

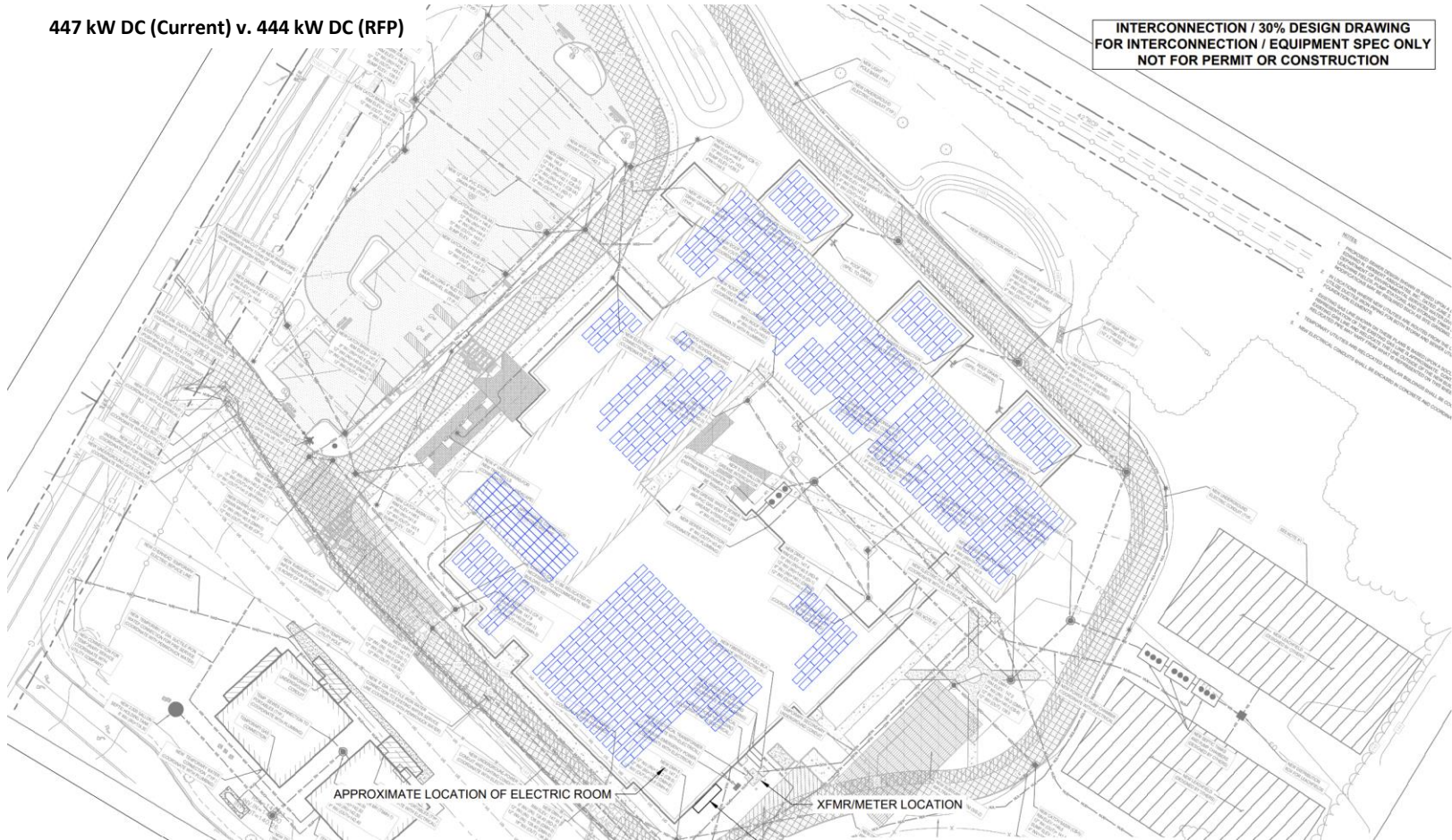
EXISTING XFMR/METER

SUMMARY TABLE	
AC SIZE	340 KW/KVA

Pelham Memorial School Array

447 kW DC (Current) v. 444 kW DC (RFP)

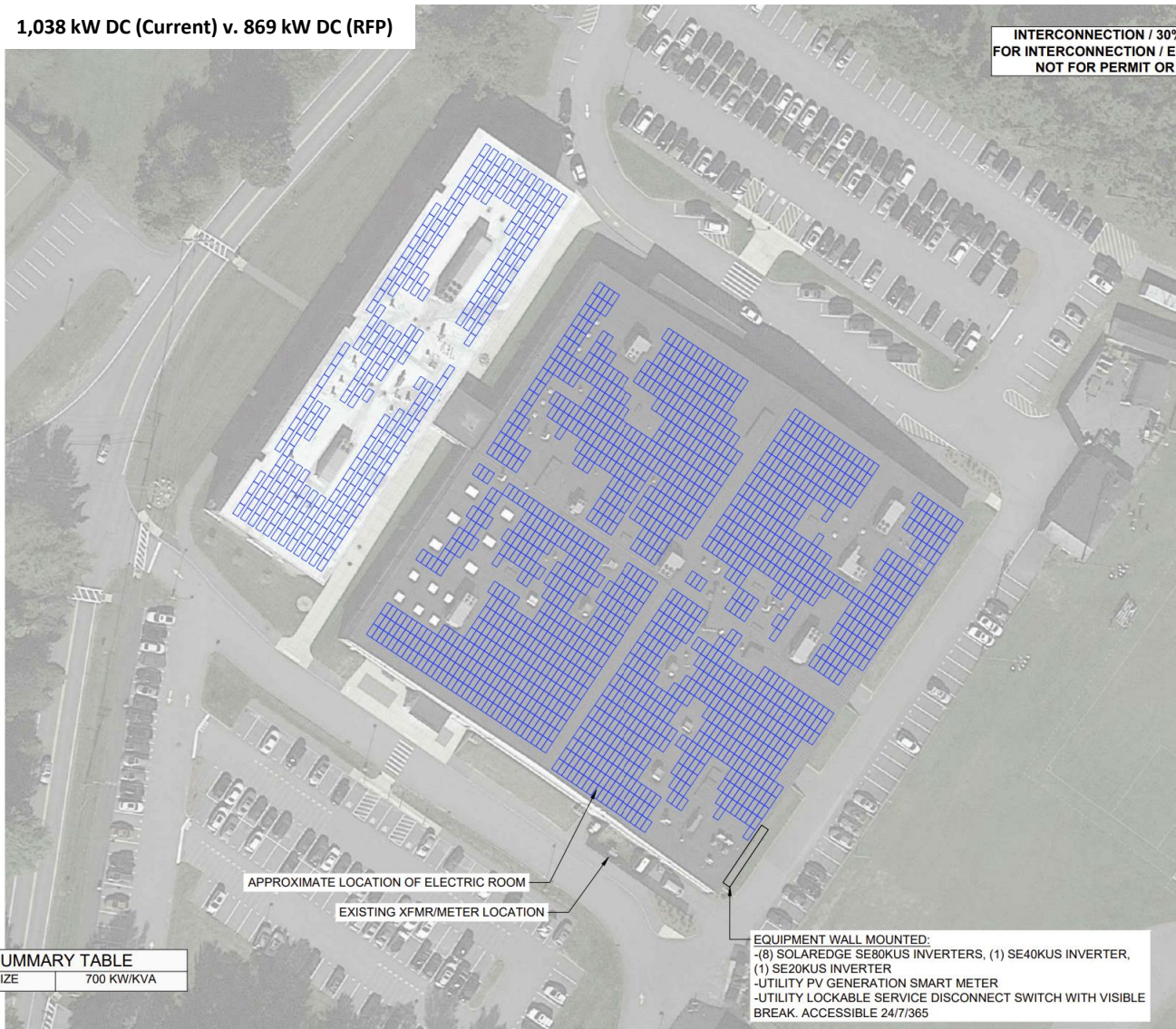
INTERCONNECTION / 30% DESIGN DRAWING
FOR INTERCONNECTION / EQUIPMENT SPEC ONLY
NOT FOR PERMIT OR CONSTRUCTION



Pelham High School Array

1,038 kW DC (Current) v. 869 kW DC (RFP)

INTERCONNECTION / 30% DESIGN DRAWING
FOR INTERCONNECTION / EQUIPMENT SPEC ONLY
NOT FOR PERMIT OR CONSTRUCTION



APPROXIMATE LOCATION OF ELECTRIC ROOM

EXISTING XFMR/METER LOCATION

EQUIPMENT WALL MOUNTED:
 -(8) SOLAREEDGE SE80KUS INVERTERS, (1) SE40KUS INVERTER,
 (1) SE20KUS INVERTER
 -UTILITY PV GENERATION SMART METER
 -UTILITY LOCKABLE SERVICE DISCONNECT SWITCH WITH VISIBLE
 BREAK. ACCESSIBLE 24/7/365

SUMMARY TABLE

AC SIZE	700 KW/KVA
---------	------------

